

SAFEGUARD METAL BUILDINGS, INC.

offers a variety of installed building packages that include metal carports, metal garages, RV carports, RV covers, metal barns, and storage buildings. Our products are designed to fit most any need that you might have. We manufacture exceptional buildings from quality components in spans up to 60' wide and as long as you need.

STANDARD ITEMS:

- 2-1/2" x 2-1/2" 14 Gauge Steel Frame
- Braces on Every Leg
- Engineer Certified Units 140 MPH – 35 PSF
- Mobile Home Anchors (Ground) or Sleeve Anchors (Cement)

OPTIONAL ITEMS:

- Heavier 12 Gauge Galvanized Frame with 20 Year Limited Rust Through Warranty

CERTIFIED TRIPLE WIDE Metal Buildings - 26' to 30' Wide



Safeguard, the ultimate, first line of defense against Mother Nature.

Regular Style



26'x21'x6'
\$1995

REGULAR STYLE - 6' SIDE HEIGHT

26x21	28x21	30x21
\$1995	\$2095	\$2195
26x26	28x26	30x26
\$2495	\$2595	\$2795
26x31	28x31	30x31
\$2995	\$3095	\$3395
26x36	28x36	30x36
\$3495	\$3695	\$3995
26x41	28x41	30x41
\$4195	\$4395	\$4595

Boxed Eave Style



26'x21'x6'
\$2095

BOXED EAVE STYLE - 6' SIDE HEIGHT

26x21	28x21	30x21
\$2095	\$2195	\$2295
26x26	28x26	30x26
\$2595	\$2795	\$2895
26x31	28x31	30x31
\$3095	\$3395	\$3495
26x36	28x36	30x36
\$3695	\$3995	\$4195
26x41	28x41	30x41
\$4395	\$4595	\$4795

Vertical Style



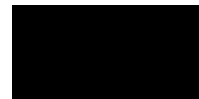
26'x21'x6'
\$2395

VERTICAL STYLE - 6' SIDE HEIGHT

26x21	28x21	30x21
\$2395	\$2495	\$2595
26x26	28x26	30x26
\$2995	\$3095	\$3295
26x31	28x31	30x31
\$3595	\$3695	\$3995
26x36	28x36	30x36
\$4195	\$4395	\$4695
26x41	28x41	30x41
\$4995	\$5195	\$5395

FREE INSTALLATION ON YOUR LEVEL SITE

* BASE PRICES LISTED ARE FOR THE ROOF TOP ONLY
* FRAME IS 1 FOOT SHORTER THAN THE STATED ROOF LENGTH



BLACK



BURGUNDY



EARTH BROWN



EVERGREEN



BARN RED



QUAKER GRAY



PEWTER GRAY



SLATE BLUE



CLAY



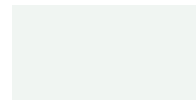
TAN



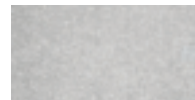
SANDSTONE



PEBBLE BEIGE



WHITE



GALVALUME

Colors may vary

www.safeguardmetalbuildings.com

OPTIONS, ACCESSORIES & EXTRAS

CERTIFIED TRIPLE WIDE Metal Buildings -26' to 30' Wide

ROOF LENGTH	20' LONG	25' LONG	30' LONG	35' LONG	40' LONG
³ 12 GAUGE FRAMING	\$300	\$400	\$500	\$600	\$700
12 GAUGE FRAMING DOUBLE LEG OPTION <small>15' TALL AND TALLER</small>	\$650	\$850	\$1050	\$1250	\$1450

SINGLE LEG SIDE HEIGHT	20' LONG	25' LONG	30' LONG	35' LONG	40' LONG
7' Tall	\$90	\$110	\$125	\$150	\$170
8' Tall	\$180	\$220	\$250	\$300	\$340
9' Tall	\$270	\$330	\$375	\$450	\$510
10' Tall	\$360	\$440	\$500	\$600	\$680
11' Tall	\$450	\$550	\$625	\$750	\$850
12' Tall	\$540	\$660	\$750	\$900	\$1020

DOUBLE LEG SIDE HEIGHT	20' LONG	25' LONG	30' LONG	35' LONG	40' LONG
15' Tall	\$1940	\$2425	\$2910	\$3395	\$3880
16' Tall	\$2090	\$2615	\$3140	\$3665	\$4180
17' Tall	\$2240	\$2800	\$3360	\$3920	\$4480
18' Tall	\$2390	\$2990	\$3590	\$4190	\$4780
19' Tall	\$2540	\$3175	\$3810	\$4445	\$5080
20' Tall	\$2690	\$3365	\$4040	\$4715	\$5380

↓ CUSTOMER MUST PROVIDE LIFT ↓

13' Tall	\$880	\$1070	\$1225	\$1450	\$1640
14' Tall	\$970	\$1180	\$1350	\$1600	\$1810

⁵ BOTH SIDES CLOSED	20' LONG	25' LONG	30' LONG	35' LONG	40' LONG
VERTICAL SIDE ADD (Both Sides) <small>6'-8'</small>	\$200	\$250	\$300	\$350	\$400
<small>9'-14'</small>	\$300	\$375	\$450	\$525	\$600
6' Tall	\$325	\$410	\$495	\$580	\$665
7' Tall	\$375	\$470	\$565	\$660	\$755
8' Tall	\$425	\$555	\$660	\$765	\$870
9' Tall	\$475	\$590	\$705	\$820	\$935
10' Tall	\$525	\$655	\$785	\$915	\$1045
11' Tall	\$600	\$745	\$890	\$1035	\$1180
12' Tall	\$625	\$785	\$945	\$1105	\$1265
13' Tall	\$720	\$900	\$1080	\$1260	\$1455
14' Tall	\$775	\$965	\$1155	\$1345	\$1565

⁶ EACH END CLOSED	26' WIDE	28' WIDE	30' WIDE
VERTICAL END ADD (Per End)	\$300	\$325	\$350
6' Tall	\$950	\$1065	\$1180
7' Tall	\$1025	\$1145	\$1265
8' Tall	\$1100	\$1225	\$1350
9' Tall	\$1175	\$1305	\$1435
10' Tall	\$1250	\$1385	\$1520
11' Tall	\$1325	\$1465	\$1605
12' Tall	\$1400	\$1545	\$1690
13' Tall	\$1475	\$1625	\$1775
14' Tall	\$1555	\$1705	\$1860

↓ VERTICAL SIDES INCLUDED ↓

15' Tall	\$1250	\$1560	\$1870	\$2180	\$2500
16' Tall	\$1400	\$1750	\$2100	\$2450	\$2800
17' Tall	\$1550	\$1940	\$2330	\$2720	\$3110
18' Tall	\$1700	\$2125	\$2550	\$2975	\$3400
19' Tall	\$1850	\$2315	\$2780	\$3245	\$3700
20' Tall	\$2000	\$2500	\$3000	\$3500	\$4000

↓ VERTICAL ENDS INCLUDED ↓

15' Tall	\$1930	\$2110	\$2295
16' Tall	\$2005	\$2515	\$2730
17' Tall	\$2080	\$2920	\$3165
18' Tall	\$2155	\$3325	\$3600
19' Tall	\$2230	\$3730	\$4035
20' Tall	\$2305	\$4135	\$4470

EXTRA LABOR	21'	26'	31'	36'	41'
INSTALL OVER EXISTING	\$200	\$250	\$300	\$350	\$400
INSTALL ON DECK/DOCK (NON FLOATING)	\$200	\$250	\$300	\$350	\$400
INSTALL ON WALL (UP TO 3')	\$200	\$250	\$300	\$350	\$400
CUT LEGS ON SITE	\$100	\$150	\$200	\$250	\$300

⁹ GARAGE DOORS

6 x 6	\$250	10 x 8	\$400
8 x 8	\$300	10 x 10	\$450
9 x 8	\$350	12 x 12	\$850

WALK IN DOORS

36" x 80"	\$200
-----------	-------

WINDOWS

30" x 30"	\$150
-----------	-------

MOBILE HOME ANCHORS\$25 each

FRAMEOUTS - END WALL

Window	\$50	Garage Door	\$100
Walk-In Door	\$75	45° (Dutch Opening)	\$135

FRAMEOUTS - SIDE WALL

Charge side closed price, plus:
 Square (Traditional) \$200 per opening
 45° (Dutch Opening) \$235 per opening
 Window \$50 Walk-In Door \$75

GABLE END - 26' - 30' Wide

(Certified)..... \$275
 Vertical Gable End Add \$80 Per End

PANELS - (3' width)

20' Long	\$75	30' Long	\$105
25' Long	\$90	35' Long	\$120

CUT PANEL FEE

20' Long	\$20	30' Long	\$30
25' Long	\$25	35' Long	\$35

J - TRIM

21' Long	\$40	36' Long	\$70
26' Long	\$50	41' Long	\$80
31' Long	\$60		

CONNECTION FEES

END TO END ON UNITS
 26' WIDE TO 30' WIDE\$150

SIDE TO SIDE

21' LONG	\$100	26' LONG	\$125	31' LONG	\$150	36' LONG	\$175	41' LONG	\$200
----------	-------	----------	-------	----------	-------	----------	-------	----------	-------

SMB ADVISES THAT ALL UNITS OVER 36' BE VERTICAL STYLE

We accept all major credit cards



www.steelbuildingstructures.com

PRICES MAY CHANGE WITHOUT NOTICE